



Gcse Drama at Christ's College Guildford

EDEXCEL(1dr0)




COMPONENT 1

Students explore stimuli in a group, developing ideas, rehearsing and refining these to create a devised piece of theatre for an assessed performance.

Devising 40% of qualification

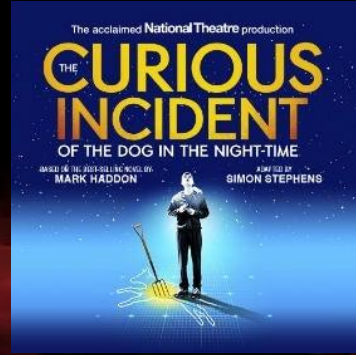
Students record the creation and development process of this group performance in a **portfolio** (30 marks) and evaluate their contribution to the process and the performance.



Participation in group-devised **performance** as a performer or **designer** (15 marks)

Component Two: Performance from text 20% of qualification

Students explore two extracts from one play text. We currently explore how to perform 'The Curious Incident of the Dog in the Night-time'.





- 01 They create a *performance* from the text, rehearsing and refining their performance/ design realisations for an assessed performance.
- 02 Each of the extract performances is assessed independently.
- 03 Students participate as a designer/performer and may submit a monologue, duologue or group piece for each extract.



Component Three: Theatre Makers in Practice 40% of qualification



An Inspector Calls

J. B. PRIESTLEY

Students practically explore a chosen set text. We currently study 'An Inspector Calls' because it is also studied in English so you get twice the insight into the play.

Component Three: Theatre Makers in Practice 40% of qualification

Students practically explore a chosen set text. We currently study 'An Inspector Calls' because it is also studied in English so you get twice the insight into the play.

Students are audience members for a live performance. They make and refine notes on the performance. They practice responding to questions for both sections in examination conditions.





Component Three: Written examination: /60

Section A – Bringing texts to life
Questions on the context, acting,
direction and design of 'An Inspector
Calls' (45 marks)



Section B – Live theatre evaluation
(students can take in 500 words of
notes) (15 marks)

NOTES

NO YOU DO NOT HAVE TO BE IN THE PRODUCTION

YES YOU WILL HAVE TO PAY MONEY TO ATTEND A
SHOW IN LONDON

NO YOU DO NOT HAVE TO GO ON THE NEW YORK
TRIP

YES YOU HAVE THE OPTION OF DOING A DESIGN
ASPECT FOR ONE OF YOUR PERFORMANCES

